

UBX-110K

4K UHD Store Gateway with Intel N97 & Core i3 N305 Processor



DeviceOn/iService

Features

- Equipped with DeviceOn/iService software for remote device management
- Supports triple display to extend a visible range and provide the detailed video contents
- Superior video quality: support up to 4K UHD resolution
- Built-in a TPM 2.0 chip for data encryption enhancement
- Support two M.2 2280 SATA SSD expansions
- An exclusive x-type thermal isolation top cover ensure safe installation and user touch
- Can be integrated with optional WiFi and Bluetooth combo module
- Supports Windows 10 LTSC 21H2, Windows 11 LTSC 24H2, Linux, and Android 14.0

Introduction

Advantech UBX-110K is an ultra-compact hospitality box computer that is used for offices, retail applications, etc. It features Intel N97 or Core i3 N305 Processor to boost system performance and working efficiency. The UBX-110K enables 4K UHD video resolution by each output that delivers vivid and high-quality A/V experiences. It also supports TPM 2.0 chip to enhance data encryption. It is an ideal mini PC for retail applications.

Specifications

Model		UBX-110K
Processor		ADL-N, N97 Core-i3, N305
	Chipset	Integrated in SoC
Graphics		Intel Integrated Graphics
Security	TPM	TPM 2.0
Memory	Technology	DDR5-4800 SODIMM *1
	Max. Capacity	16GB (non-ECC)
Thermal Solution		Fanless
Resolution		USB-C: support up to 4K UHD (4096 x 2160@60Hz); HDMI 1 and 2: support up to 4K UHD (4096 x 2160@60Hz)
I/O - Rear	Video	USB-C *1 HDMI2.1 *2
	Audio	Line-out *1
	USB	USB 3.2 Gen1 Type A(Blue) *2 USB-C(Supports DP 1.4, 4K@60Hz video output, 5V/2A, USB 3.2 Gen2 data transfer) *1
	LAN	RJ45 *2 (LAN1, 2 - i226: up to 2.5 Gbps)
	Power Jack	DC 12V Power DIN4 *1
	Anti-theft Lock	Kensington Lock *1
I/O - Front	USB	USB 3.2 Gen1 Type A (Blue) *2
	COM	DB9 *1 (RS232)
	Button	Power Push Button Circle (Black) *1, button w/ power LED (Dark Green)
Internal I/O	Power Connector	6 pin pitch2.5 wafer *1
	USB2.0 Connector	5 pin pitch1.0 *2
LED		HDD Access (Green) *1
Mounting		VESA/Wall
Expansion	WiFi/BT	M.2 E-key 2230 *1
	Storage	M.2 M-key 2280 *2
Operating System		Windows IoT LTSC 2021, Windows 11 IoT, Linux, Android 14.0
Temperature		Operating: 0~ 45°C, with 0.7m/s airflow Storage: -20~ 60°C
Target Dimensions (W x D x H)		182.5 x 141.0 x 42.15 mm
Weight		NW: 0.94 Kg
		GW: 1.57 Kg
Certifications	EMC	CE, FCC, CCC, BSMI, UKCA, RF RED
	Safety	UL, CB, CCC, BSMI

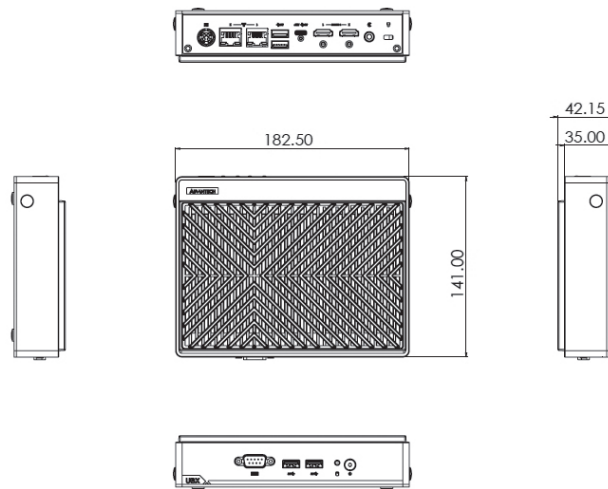
Specifications Cont.

DeviceOn/iService Remote Device Management	Operating System	Windows 10 IoT 2021
	Common Controls (Reboot, Shutdown)	✓
	Remote Desktop	✓ (via VNC)
	Audio Controls	✓
	Connection Status	✓
	Hardware Status	✓
	Hard Disk Status	✓
	Batch Operation Support	✓
	OTA Storage Management	FTP
	OTA Software Updates	✓
	Software Watchlist	✓
	Software Start/Stop	✓
	Peripherals Watchlist	✓

Note: DeviceOn/iService software must be download from the Advantech website at <https://www.advantech.com/search/?q=DeviceOn%2FiService&st=support&ssl=Utility>

Dimensions

Unit: mm



Ordering Information

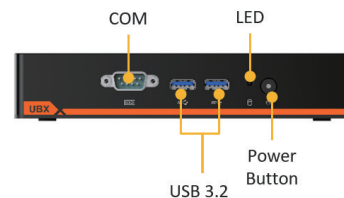
P/N	Description
UBX-110K-BN100	UBX-110, ADL-N N97, barebone
UBX-110K-BN200	UBX-110, i3 N305, barebone
UBX-110K-UN100	UBX-110, ADL-N N97, barebone, TW
UBX-110K-UN200	UBX-110, i3 N305, barebone, TW

UBX-110K Barebone Package Content

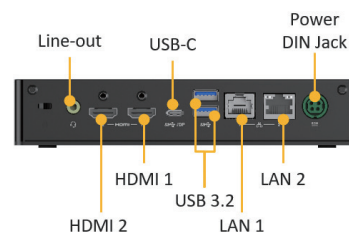
- 1 unit UBX-110K Box Computer
- 1 pcs DC12V/60W Power Adapter
- 1 pcs Memory Shielding Case and 1 pcs Thermal Pad for Memory Shielding Case
- 1 pcs Thermal Pad for DDR5 Memory
- 1 pcs SSD Shielding Case and 1 pcs Thermal Pad for SSD Shielding Case
- 2 pcs Thermal Pad for M.2 SSD

I/O Interface

Front View



Rear View



Optional Accessories

Product	P/N	Usage	Description
Mounting Kit	UBX-100P-V00E	1	UBX-110 VESA Kit
	UBX-100P-WM0E	1	UBX-110 Wall Mount Kit
DDR5 Memory	SQR-SD5N8G4K8SNGBB	1	262pin SODIMM DDR5 4800 8GB 1.1v 1Gx16(0-95)
	SQR-SD5N16G4K8SNBB	1	262pin SODIMM DDR5 4800 16GB 1.1v 2Gx8(0-95)
	SQR-SD5N8G4K8MNGAB	1	262pin SODIMM DDR5 4800 8GB 1.1v 1Gx16(0-95)
	SQR-SD5N16G4K8MNAB	1	262pin SODIMM DDR5 4800 16GB 1.1v 2Gx8(0-95)
	AQD-SD5V8GN48-SC	1	8GB SO-DDR5-4800 1GX16 1.1V SAM
	AQD-SD5V16GN48-SB	1	16GB SO-DDR5-4800 2GX8 1.1V SAM
Storage	AMF-S8BV1F64GDM2C	1 or 2	AMF, M.2 2280 SATA SSD, 64GB, 3D TLC BiCS5, (0~70C)
	AMF-S8BV1F128GDM2C	1 or 2	AMF, M.2 2280 SATA SSD, 128GB, 3D TLC BiCS5, (0~70C)
	AMF-S8BV1F256GDM2C	1 or 2	AMF, M.2 2280 SATA SSD, 256GB, 3D TLC BiCS5, (0~70C)
	AMF-S8BV2F512GDM2C	1 or 2	AMF, M.2 2280, SATA SSD, 512GB, 3D TLC BiCS5, (0~70C)
	AMF-S8BV4F1TDM2C	1 or 2	AMF, M.2 2280, SATA SSD, 1TB, 3D TLC BiCS5, (0~70C)
	AMF-S8BV4F2TDM2C	1 or 2	AMF, M.2 2280, SATA SSD, 2TB, 3D TLC BiCS5, (0~70C)
	SQF-S8BV1-64GSDSDC	1 or 2	SQF SATA M.2 2280 650-D 64G 3D TLC BiCS5 (0~70°C)
	SQF-S8BV1-128GSDSDC	1 or 2	SQF SATA M.2 2280 650-D 128G 3D TLC BiCS5 (0~70°C)
	SQF-S8BV1-256GSDSDC	1 or 2	SQF SATA M.2 2280 650-D 256G 3D TLC BiCS5 (0~70°C)
	SQF-S8BV2-512GSDSDC	1 or 2	SQF SATA M.2 2280 650-D 512G 3D TLC BiCS5 (0~70°C)
	SQF-S8BV4-1TSDSDC	1 or 2	SQF SATA M.2 2280 650-D 1T 3D TLC BiCS5 (0~70°C)
	SQF-S8BV4-2TSDSDC	1 or 2	SQF SATA M.2 2280 650-D 2T 3D TLC BiCS5 (0~70°C)
	SQF-S8BV1-64GSDSDM	1 or 2	SQF SATA M.2 2280 650-D 64G 3D TLC BiCS5 (-20~85°C)
	SQF-S8BV1-128GSDSDM	1 or 2	SQF SATA M.2 2280 650-D 128G 3D TLC BiCS5 (-20~85°C)
	SQF-S8BV1-256GSDSDM	1 or 2	SQF SATA M.2 2280 650-D 256G 3D TLC BiCS5 (-20~85°C)
	SQF-S8BV2-512GSDSDM	1 or 2	SQF SATA M.2 2280 650-D 512G 3D TLC BiCS5 (-20~85°C)
	SQF-S8BV4-1TSDSDM	1 or 2	SQF SATA M.2 2280 650-D 1T 3D TLC BiCS5 (-20~85°C)
	SQF-S8BV4-2TSDSDM	1 or 2	SQF SATA M.2 2280 650-D 2T 3D TLC BiCS5 (-20~85°C)
	96FD80-N064-TR72	1 or 2	Transcend M.2 2280 64GB SATA3 SAM MLC
	96FD80-N128-TR72	1 or 2	Transcend M.2 2280 128GB SATA3 SAM MLC
96FD80-N256-TR72	1 or 2	Transcend M.2 2280 256GB SATA3 SAM MLC	
WiFi, BT Combo Module, antenna	UBX-100P-W00E	1	UBX-110, Wi-Fi 5+ BT Module, 2.4/5GHz M.2 2230
Power Cord	1702002600	1	Power Cord UL 3P 10A 125V 183cm
	1700018705	1	Power Cord EU 3P 10A 250V 183cm 180°
	1700000596-11	1	Power Cord CCC 3P 10A 250V 183cm
	1700001714	1	Power Cord BSMI 3P 7A 125V 183cm
	1700018704	1	Power Cord BSI 3P 10A 250V 180cm (UK)
	1700000237	1	Power Cord PSE 3P 12A 125V 183cm
	1702031836	1	Power Cord SAA 3P 10A 250V 183cm (AU)
Operating System	20708WX1ES0031	1	Img WIN10 LTSC 2021-ELE UBX-110K V1.00 7MUI x64
	20708WX1VS0032	1	Img WIN10 LTSC 2021-VE UBX-110K V1.00 7MUI x64
	20708WLE1S0002	1	WIN11 LTSC_24H2_ELE UBX-110/210K(N) V1.00 7MUI
	20708WLV1S0002	1	WIN11 LTSC_24H2_VLE UBX-110/210K(I3) V1.00 7MUI
	20708U22DS0005	1	UBX-110K, 210K Ubuntu 22.04 V1.01
	20708AIONS0063	1	UBX-110K Android 14 image V0.5.0

DeviceOn/iService

Unified Remote Device Management Software



Features

- Supports Advantech devices equipped with Windows, Android, and Linux OS
- Flexible device, location, user, and permissions management
- Enables remote monitoring and control of hardware, software, and peripherals
- Supports over-the-air (OTA) firmware and software updates
- Ensures quick, easy, and secure device onboarding
- RESTful APIs for third-party system integration

Introduction

Advantech's DeviceOn/iService is a next-generation unified device management solution based on the WISE-DeviceOn platform. Designed to enable centralized monitoring and remote management, DeviceOn/iService supports Advantech devices equipped with Windows, Linux, or Android operating systems. The software also supports the management of applications and integrated peripherals, such as a barcode scanner, card reader, camera, and printer. Users can remotely access and control connected devices, take screenshots, rollout OTA upgrades, and use remote desktop capabilities for troubleshooting from any location at any time. Moreover, DeviceOn/iService supports batch operations to facilitate the management of multiple devices simultaneously for easy and convenient device configuration and deployment.

Total Management



Devices & Hardware

- Windows, Linux, Android
- Hardware, storage, battery



Software & Peripherals

- Software monitoring & access
- Screens, USB devices, printers



Open for Expansion

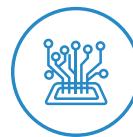
- Peripheral integration
- Open APIs for integration

Remote Access



Real-Time Monitoring

- Connection/hardware status
- Software/peripheral status
- Failure notifications



Remote Controls

- Power controls
- Audio, backlight controls
- Software controls



Troubleshooting

- Screenshots
- Remote desktop support

Operational Efficiency



OTA updates

- System/software updates
- File repository management
- App store



Batch Controls

- 1-to-many batch reboot, etc.
- Time-saving tasks



Setup Booster

- Software/peripheral watchlist
- Roles, rule templates

Note: Some functions may vary according to the product

System Architecture

